

Toscana

velatura per ambienti interni ed esterni
antiquing finish for interiors and exteriors



STILNOVO

l'arte del decorativo italiano



Finitura per la realizzazione di velature colorate in interni ed esterni. Toscana permette di ottenere effetti decorativi che ricordano le lavorazioni del passato donando al supporto la sicurezza delle moderne tecnologie. Applicato in esterni, Toscana assicura idrorepellenza e traspirabilità al supporto conferendo agli edifici storici un naturale effetto antichizzato.



Italia, Toscana: Corrente



CARATTERE + T.059*

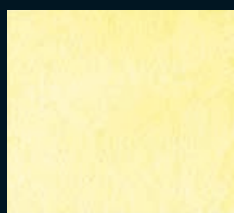


FONDO LISCIO + T.065

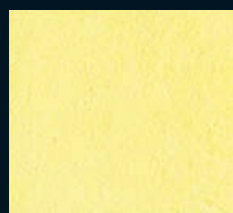


STILNOVO
l'arte del decorativo italiano

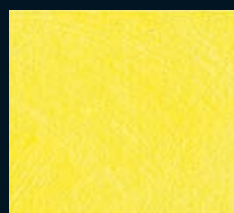
Letteraria del Duecento, Poesia



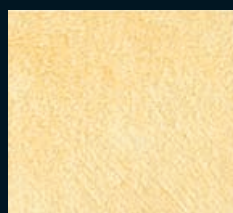
T.001



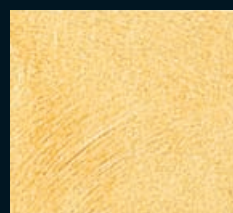
T.002



T.003



T.004*



T.005*



T.006*



T.007



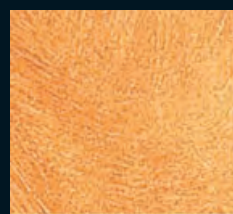
T.008



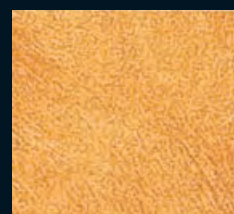
T.009



T.010*



T.011*



T.012*



T.013



T.014



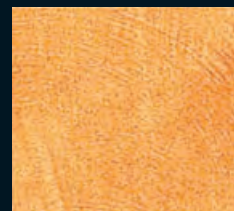
T.015



T.016*



T.017*



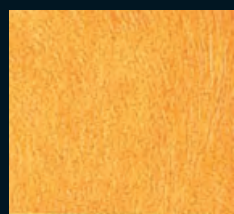
T.018*



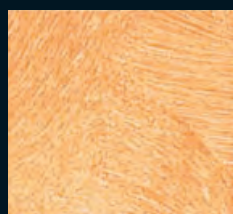
T.019



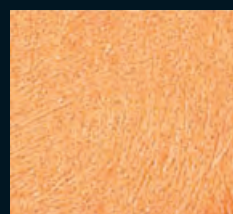
T.020



T.021



T.022



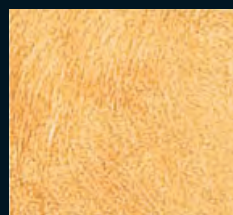
T.023



T.024



T.025*



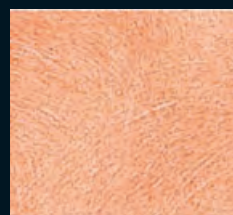
T.026*



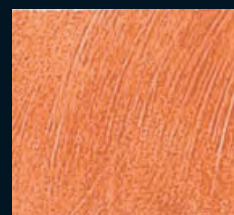
T.027*



T.028*



T.029*



T.030*



T.031*



T.032*



T.033*



T.034



T.035



T.036

e Parole di Carattere Nobili



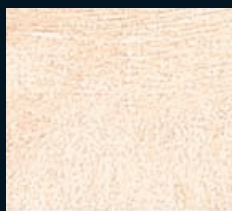
T.037



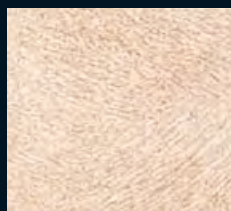
T.038



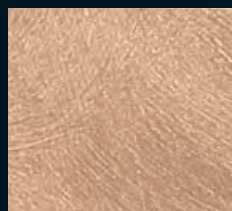
T.039



T.040



T.041



T.042



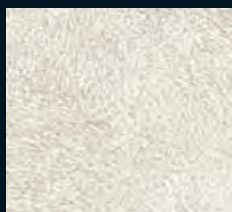
T.043



T.044



T.045



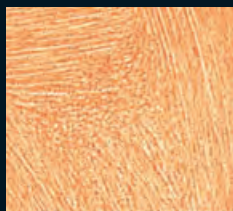
T.046



T.047



T.048



T.049



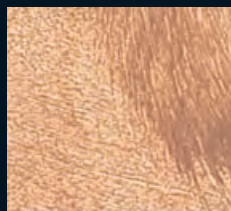
T.050



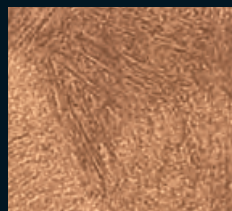
T.051



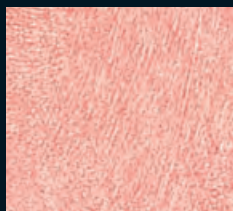
T.052*



T.053*



T.054*



T.055



T.056



T.057



T.058*



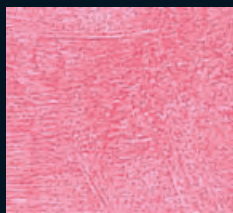
T.059*



T.060*



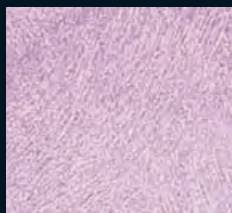
T.061



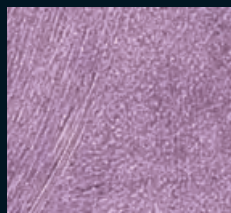
T.062



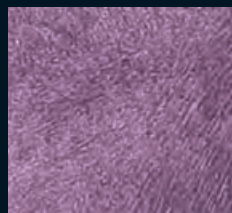
T.063



T.064



T.065



T.066



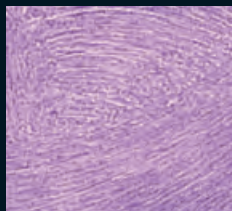
T.067



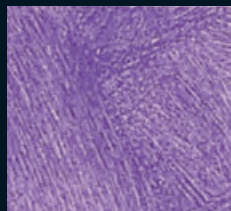
T.068



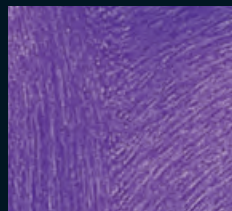
T.069



T.070



T.071



T.072

le e Raffinato.

La presente cartella è di tipo fotografico, pertanto puramente indicativa.
Rappresenta una riproduzione delle reali applicazioni e ha il solo scopo di orientare alla scelta.
Non può essere oggetto di contestazione.
Per la scelta ottimale dei colori fare riferimento alla cartella con il prodotto applicato.



T.073



T.074



T.075



T.076



T.077



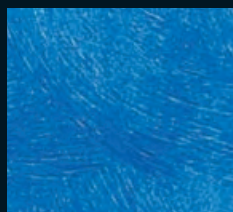
T.078



T.079



T.080



T.081



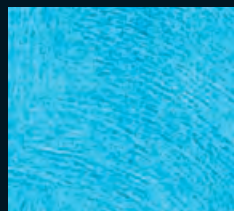
T.082



T.083



T.084



T.085



T.086



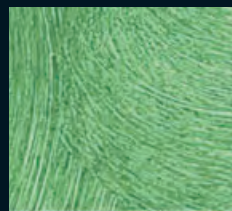
T.087



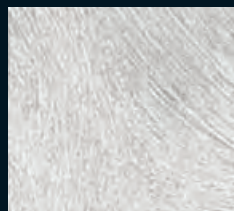
T.088



T.089



T.090



T.091*



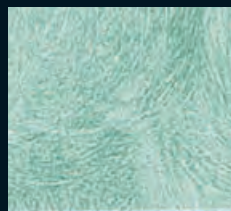
T.092*



T.093*



T.094



T.095



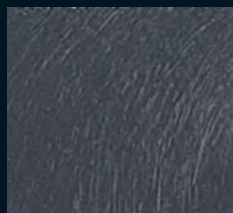
T.096



T.097



T.098



T.099



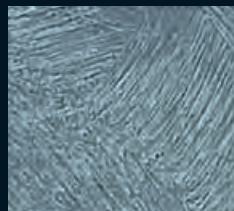
T.100



T.101



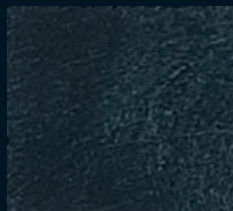
T.102



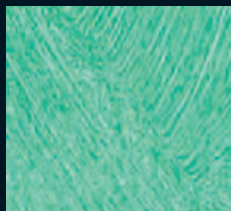
T.103



T.104



T.105



T.106



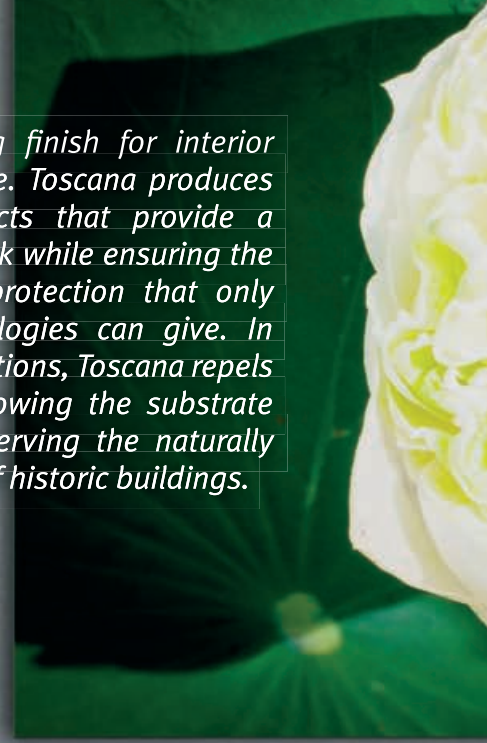
T.107



T.108

* le tinte con asterisco sono applicabili anche in esterno utilizzando la base "Toscana – velatura acril-silossanica per esterni"
* tints also for exteriors, using "Toscana – acrylic-siloxane satin glaze coating for exteriors"

Antique coating finish for interior and exterior use. Toscana produces decorative effects that provide a true antique look while ensuring the full substrate protection that only modern technologies can give. In outdoor applications, Toscana repels water while allowing the substrate to breathe, preserving the naturally antiqued look of historic buildings.



 ITA

CARATTERISTICHE DEL PRODOTTO

Velatura lavabile per interni ed esterni, particolarmente indicata per assicurare idrorepellenza e traspirabilità al supporto ed un naturale effetto antichizzato.

PREPARAZIONE DEL SUPPORTO


Per rendere l'effetto estetico finale uniforme è necessario regolare l'assorbimento del supporto applicando con pennello o rullo il prodotto FONDO LISCIO o il prodotto ruvido CARATTERE di Stilnovo.

APPLICAZIONE DEL PRODOTTO


IL PRODOTTO SI APPLICA IN 1 STRATO:

- LAVORAZIONE A GUANTO

Disporre una sufficiente quantità di prodotto sul guanto inumidito con acqua e ben strizzato e passarlo sulla superficie con movimenti circolari.

- LAVORAZIONE A PENNELLO

Intingere il pennello e passarlo a pennellate incrociate evitando riquadrature nette. Riprendere la lavorazione fino a raggiungere la parte appena trattata con l'attrezzo scarico in modo da evitare giunte evidenti ed antiestetiche. La quantità di materiale impiegato, la dimensione, la forma e l'intensità delle pennellate determinano l'effetto estetico finale.

- EFFETTO INTENSO

Se si vuole ottenere un effetto più uniforme e un colore più intenso applicare il prodotto in 2 strati, sia per la lavorazione a guanto che a pennello.

DATI TECNICI

Resa indicativa: 8-10 m²/L per strato. **Diluizione:** pronto all'uso (in interno con "Toscana – Velatura per interni") / 0-10% con acqua (in esterno con "Toscana – Velatura per esterni").
Essiccazione: Secco al tatto: 1 ora; Ricopribile: 6-8 ore (i tempi possono variare in base alle condizioni ambientali).

 ENG

PRODUCT FEATURES

Washable decorative paint for interiors and exteriors, particularly suitable to ensure water resistance and breathability to the surfaces, giving to historical buildings a natural antique effect.

SURFACE PREPARATION


To make the final aesthetic effect uniform it is necessary to adjust the absorbency of the support by applying the smooth primer FONDO LISCIO or the rough product CARATTERE of the Stilnovo range by brush or roller.

APPLICATION OF THE PRODUCT


THE PRODUCTS MUST BE APPLIED IN 1 COAT:

- GLOVE APPLICATION

Put enough product on a moist and wringed glove, and pass it on the surface with circular movements.

- BRUSH APPLICATION

Spread the product crossing the strokes on the suitably prepared surface. Product quantity, form and intensity of the strokes create the decorative effect. The final aesthetic aspect depends on the quantity of product applied, the brush dimensions, the width and intensity of the strokes.

- INTENSE HOMOGENEOUS EFFECT

In order to obtain a homogeneous effect and a more intense color, apply two coats of the product by paint glove or brush.

TECHNICAL DATA

Average spreading capacity: 8-10 m²/L. per coat. **Thinning:** ready to use (for interior use with "Toscana – satin glaze coating for interiors") / 0-10% with water (for exterior use with "Toscana – acrylic-siloxane satin glaze coating for exteriors"). **Drying time:** Dry to touch: 1 hour; Can be overpainted after: 6-8 hours (time can change due the weather conditions).



STILNOVO
l'arte del decorativo italiano

PPG Univer S.p.a. - Via Monte Rosa, 7
 28010 Cavallirio (Novara) - Italy
 Tel. +39 0163 806.611 - Fax: +39 0163 806.696
 www.stilnovodecorativo.it

