

*Poesia*



**STILNOVO**

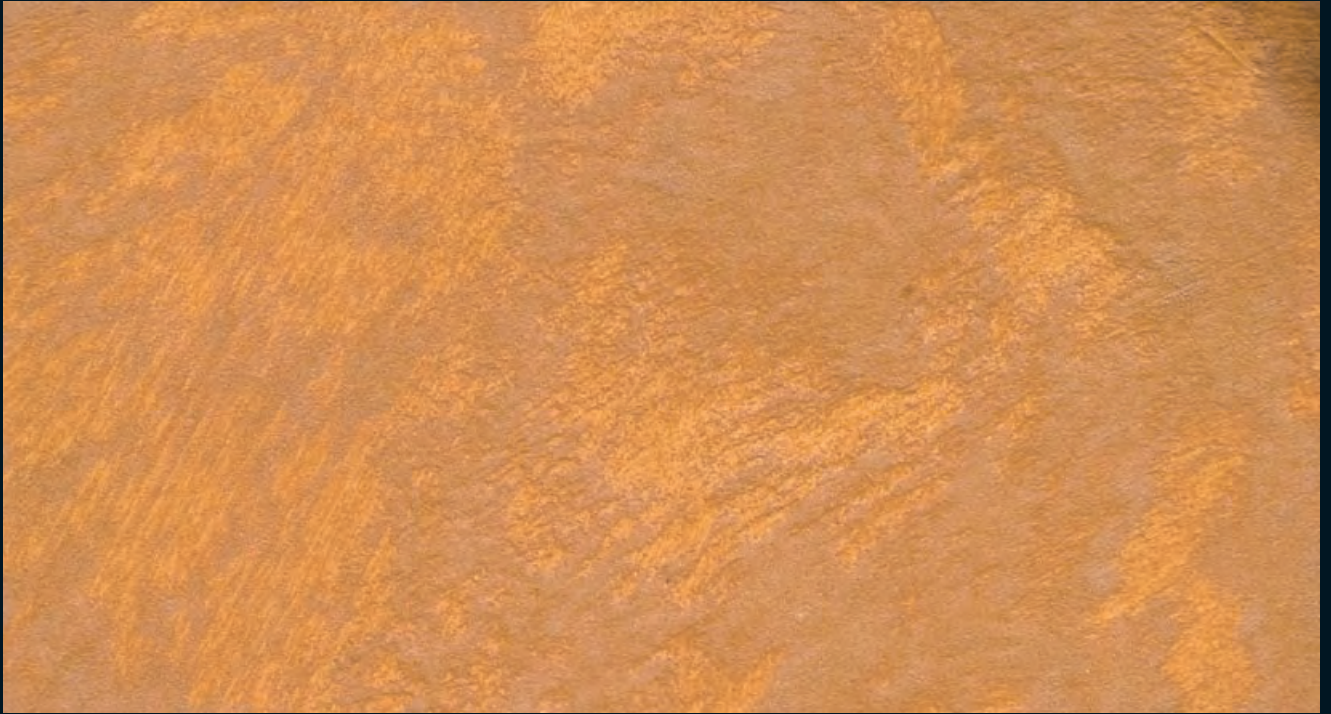
*l'arte del decorativo italiano*



Poesia è una finitura decorativa perlescente all'acqua capace di interpretare le tendenze dell'arredamento e della decorazione d'interni con una gamma di possibilità capace di soddisfare la richiesta di soluzioni diversificate. Il colore stesso diventa tendenza di stile e dà personalità valorizzando le scelte di stile.



# Italia, Toscana: Corrente L



FONDO LISCIO + P.076



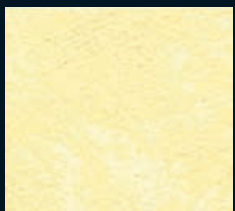
FONDO LISCIO + P.041



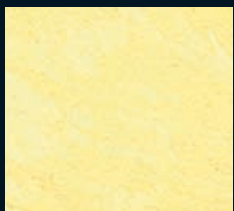
**STILNOVO**  
*l'arte del decorativo italiano*



# Letteraria del Duecento, Poesia



P.001



P.002



P.003



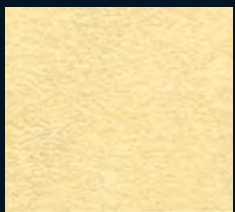
P.004



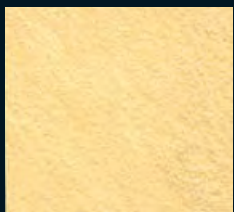
P.005



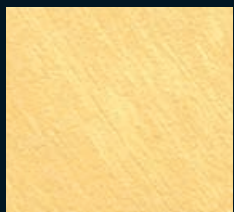
P.006



P.007



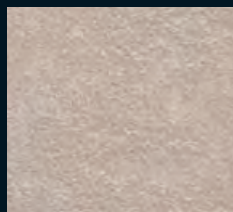
P.008



P.009



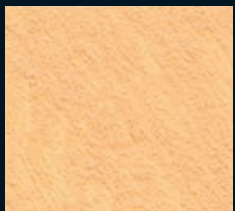
P.010



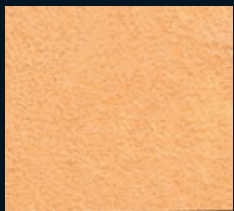
P.011



P.012



P.013



P.014



P.015



P.016



P.017



P.018



P.019



P.020



P.021



P.022



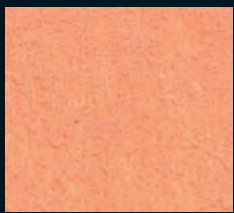
P.023



P.024



P.025



P.026



P.027



P.028



P.029



P.030



P.031



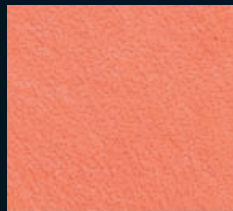
P.032



P.033



P.034



P.035



P.036

# *e Parole di Carattere Nobile*



P.037



P.038



P.039



P.040



P.041



P.042



P.043



P.044



P.045



P.046



P.047



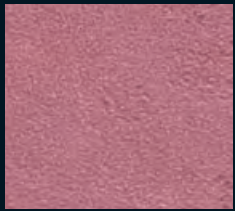
P.048



P.049



P.050



P.051



P.052



P.053



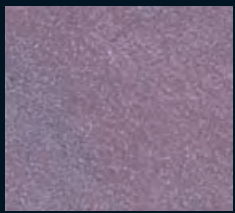
P.054



P.055



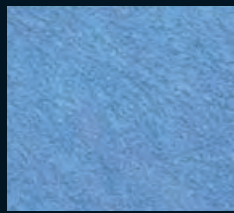
P.056



P.057



P.058



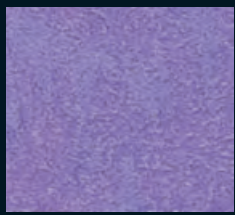
P.059



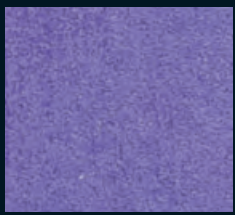
P.060



P.061



P.062



P.063



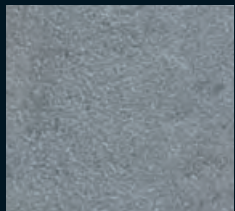
P.064



P.065



P.066



P.067



P.068



P.069



P.070



P.071



P.072

# e Raffinato.

La presente cartella è di tipo fotografico, pertanto puramente indicativa.  
Rappresenta una riproduzione delle reali applicazioni e ha il solo scopo di orientare alla scelta.  
Non può essere oggetto di contestazione.  
Per la scelta ottimale dei colori fare riferimento alla cartella con il prodotto applicato.



P.073



P.074



P.075



P.076



P.077



P.078



P.079



P.080



P.081



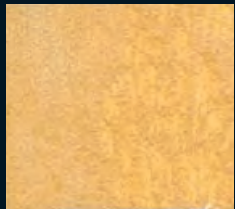
P.082



P.083



P.084



P.085



P.086



P.087



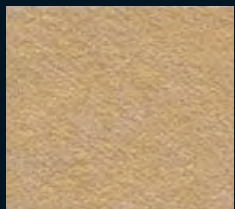
P.088



P.089



P.090



P.091



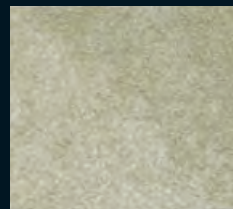
P.092



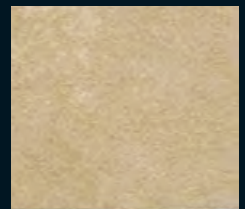
P.093



P.094



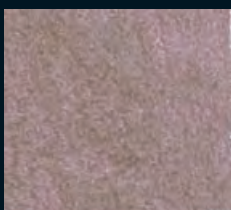
P.095



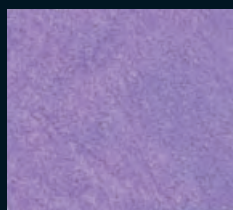
P.096



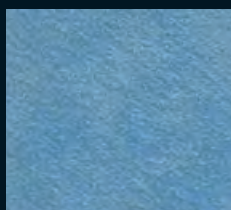
P.097



P.098



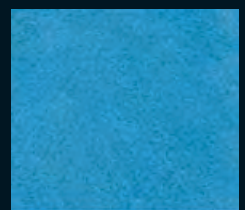
P.099



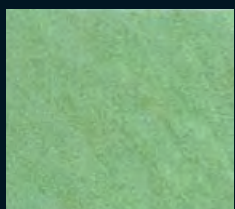
P.100



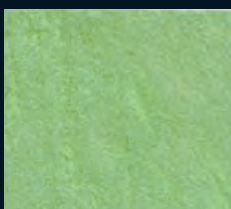
P.101



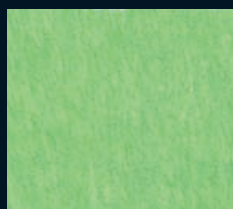
P.102



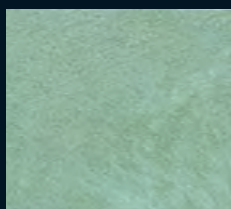
P.103



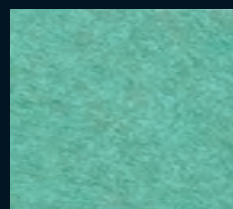
P.104



P.105



P.106



P.107



P.108

*Poesia is a pearlescent water based decorative finishing, allowing you to capture and create stylish interior decorative trends with a range of possibilities able to satisfy the request for different solutions. Colour becomes protagonist endowing personality and style, enhancing and refining the environment.*



 ITA

**CARATTERISTICHE DEL PRODOTTO**

Finitura decorativa all'acqua perlescente per interni. Disponibile in base oro e base argento.

**PREPARAZIONE DEL SUPPORTO**


Per rendere l'effetto estetico finale uniforme è necessario regolare l'assorbimento del supporto applicando con pennello o rullo il prodotto FONDO LISCIO.

**APPLICAZIONE DEL PRODOTTO**


IL PRODOTTO SI APPLICA IN 1 STRATO:

intingendo il pennello "spalter" e passandolo a pennellate incrociate evitando riquadrature nette. Riprendere la lavorazione fino a raggiungere la parte appena trattata con l'attrezzo scarico in modo da evitare giunte evidenti ed antiestetiche. La quantità di materiale impiegato, la dimensione, la forma e l'intensità delle pennellate determinano l'effetto estetico finale.

**DATI TECNICI**

**Resa indicativa:** 10-12 m<sup>2</sup>/L per strato. **Diluizione:** 5-10% con acqua. **Essiccazione:** Secco al tatto: 1 ora (i tempi possono variare in base alle condizioni ambientali).

 ENG

**PRODUCT FEATURES**

Water based decorative finishing for interiors. Available in gold base and silver base.

**SURFACE PREPARATION**


To make the final aesthetic effect uniform it is necessary to adjust the absorbency of the support by applying the smooth primer FONDO LISCIO.

**APPLICATION OF THE PRODUCT**


THE PRODUCTS MUST BE APPLIED IN 1 COAT:

with "spalter" brush spreading the product crossing the strokes on the suitably prepared surface. Product quantity, form and intensity of the strokes create the decorative effect. The final aesthetic aspect depends on the quantity of product applied, the brush dimensions, the width and intensity of the strokes.

**TECHNICAL DATA**

**Average spreading capacity:** 10-12 m<sup>2</sup>/L per coat. **Thinning:** 5-10% with water. **Drying time:** Dry to touch: 1 hour (time can change due the weather conditions).



**STILNOVO**  
*l'arte del decorativo italiano*

PPG Univer S.p.a. - Via Monte Rosa, 7  
28010 Cavallirio (Novara) - Italy  
Tel. +39 0163 806.611 - Fax: +39 0163 806.696  
[www.stilnovodecorativo.it](http://www.stilnovodecorativo.it)

