

Carattere



STILNOVO

l'arte del decorativo italiano

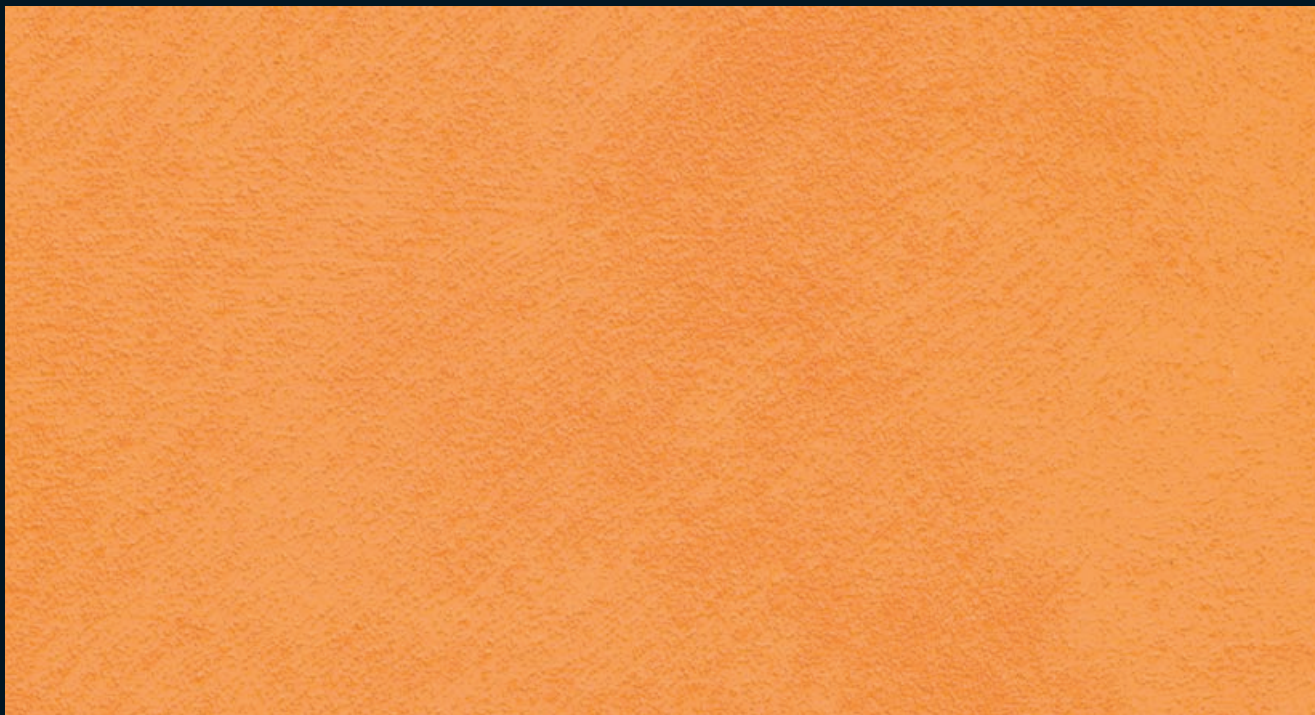


Pittura decorativa dal raffinato effetto ruvido per creare sulle superfici una particolare decorazione pregiata ed antica.

Grazie alle ottime performance di copertura e riempimento Carattere può essere utilizzato sia come finitura colorata che come fondo di preparazione per altri effetti della gamma Stilnovo.



Italia, Toscana: Corrente Le



CTT.039



CTT.048



STILNOVO
l'arte del decorativo italiano

Letteraria del Duecento, Poesia



CTT.001



CTT.002



CTT.003



CTT.004



CTT.005



CTT.006



CTT.007



CTT.008



CTT.009



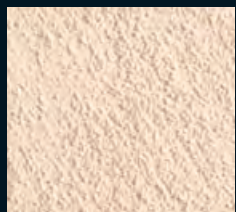
CTT.010



CTT.011



CTT.012



CTT.013



CTT.014



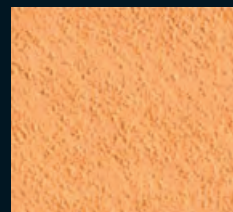
CTT.015



CTT.016



CTT.017



CTT.018



CTT.019



CTT.020



CTT.021



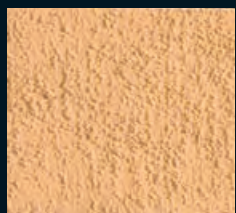
CTT.022



CTT.023



CTT.024



CTT.025



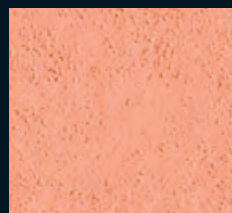
CTT.026



CTT.027



CTT.028



CTT.029



CTT.030



CTT.031



CTT.032



CTT.033



CTT.034



CTT.035



CTT.036

e Parole di Carattere Nobile



CTT.037



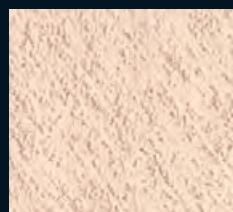
CTT.038



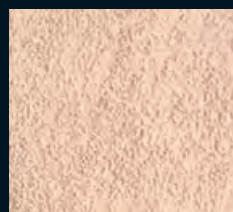
CTT.039



CTT.040



CTT.041



CTT.042



CTT.043



CTT.044



CTT.045



CTT.046



CTT.047



CTT.048



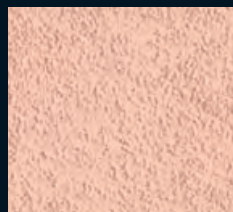
CTT.049



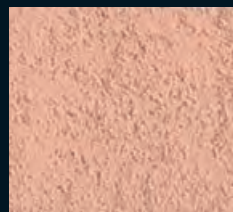
CTT.050



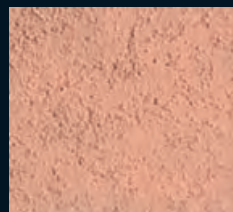
CTT.051



CTT.052



CTT.053



CTT.054



CTT.055



CTT.056



CTT.057



CTT.058



CTT.059



CTT.060



CTT.061



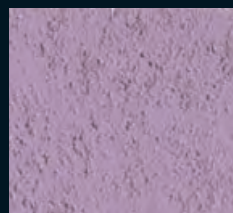
CTT.062



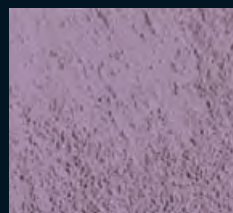
CTT.063



CTT.064



CTT.065



CTT.066



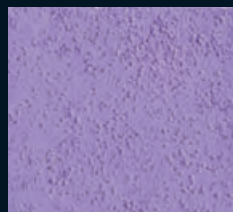
CTT.067



CTT.068



CTT.069



CTT.070



CTT.071



CTT.072

le e Raffinato.

La presente cartella è di tipo fotografico, pertanto puramente indicativa.
Rappresenta una riproduzione delle reali applicazioni e ha il solo scopo di orientare alla scelta.
Non può essere oggetto di contestazione.
Per la scelta ottimale dei colori fare riferimento alla cartella con il prodotto applicato.



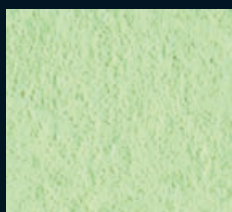
CTT.073



CTT.074



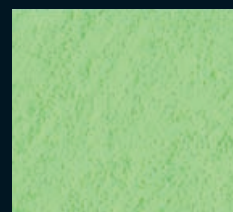
CTT.075



CTT.076



CTT.077



CTT.078



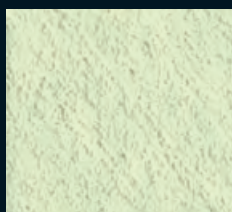
CTT.079



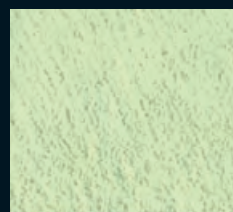
CTT.080



CTT.081



CTT.082



CTT.083



CTT.084



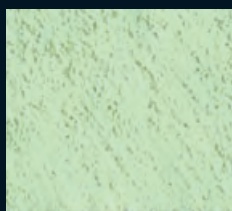
CTT.085



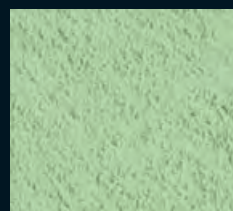
CTT.086



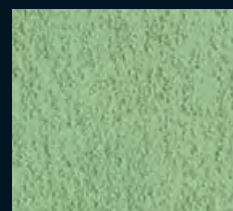
CTT.087



CTT.088



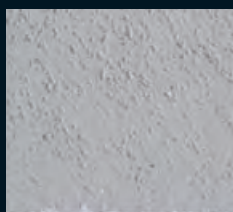
CTT.089



CTT.090



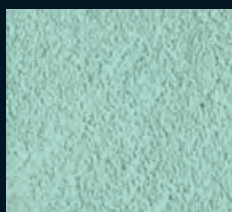
CTT.091



CTT.092



CTT.093



CTT.094



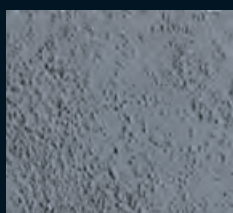
CTT.095



CTT.096



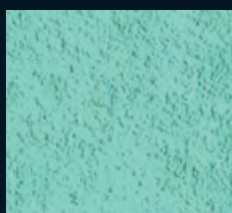
CTT.097



CTT.098



CTT.099



CTT.100



CTT.101



CTT.102



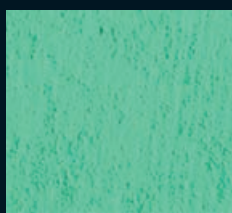
CTT.103



CTT.104



CTT.105



CTT.106



CTT.107



CTT.108

Water based decorative paint with a rough effect that let you obtain an precious and antique effect on the surfaces.

Thanks to the excellent performance of coverage and filling Carattere can be used as a colored finish and as a primer for the other Stilnovo decorative paints.



 ITA

CARATTERISTICHE DEL PRODOTTO

Pittura ruvida decorativa all'acqua utilizzabile come finitura o fondo per gli altri prodotti della gamma Stilnovo. Per interni ed esterni.

PREPARAZIONE DEL SUPPORTO

In caso di applicazione di Carattere come finitura, per rendere l'effetto estetico finale uniforme è necessario regolare l'assorbimento del supporto applicando con pennello o rullo il prodotto FONDO LISCIΟ.



APPLICAZIONE DEL PRODOTTO



IL PRODOTTO SI APPLICA IN 1 STRATO:

intingendo la pennellessa ed applicando a pennellate incrociate evitando riquadrature nette. La quantità di materiale impiegato, la dimensione, la forma e l'intensità delle pennellate determinano l'effetto estetico finale.

DATI TECNICI

Resa indicativa: 6-8 m²/L per strato **Diluizione:** max. 10% con acqua **Essiccazione:** Secco al tatto: 1 ora; Ricopribile: 6-8 ore (i tempi possono variare in base alle condizioni ambientali).

 ENG

PRODUCT FEATURES

Water based rough decorative paint usable as finishing or as a primer for the Stilnovo range. For interiors and exteriors.

SURFACE PREPARATION

Carattere colored finishing: to make the final aesthetic effect uniform it is necessary to adjust the absorbency of the support by applying the smooth primer FONDO LISCIΟ.



APPLICATION OF THE PRODUCT



THE PRODUCTS MUST BE APPLIED IN 1 COAT:

with brush spreading the product crossing the strokes on the suitably prepared surface. The final easthetic aspect depends on the quantity of product applied, the brush dimensions, the width and intensity of the strokes.

TECHNICAL DATA

Average spreading capacity: 6-8 m²/L. per coat **Thinning:** max. 10% with water **Drying time:** Dry to touch: 1 hour; Can be overpainted after: 6-8 hours (time can change due the weather conditions).



STILNOVO
l'arte del decorativo italiano

PPG Univer S.p.a. - Via Monte Rosa, 7
28010 Cavallirio (Novara) - Italy
Tel. +39 0163 806.611 - Fax: +39 0163 806.696
www.stilnovodecorativo.it

